

# OPERATING INSTRUCTIONS

**ELTEX**

## TOP PROTECT 2 IN 1 LAMINATE-LABEL TYP B



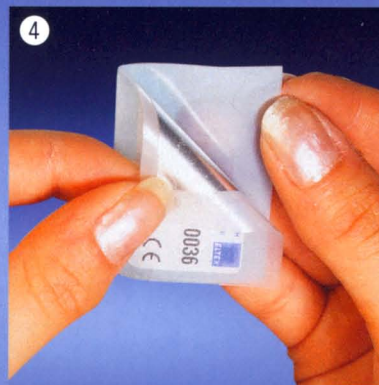
1 Separate the inscribed foil-label simply at the cross perforation.



2 Bend down the carrier-foil at one of the outside edges and remove the white liner.



3 Fold both carrier-wings at the perforation and press them together strongly.



4 Remove blue wing so that the label remains on the transparent carrier (do not separate at the perforation). The glue remains exposed.



5 Position the label by the transparent carrier-foil and press it strongly on the ground.



6 Remove simply the carrier-foil.  
Final bond of the glue is reached after approx. 48 hrs.

ELTEX Industrie-  
kennzeichnung GmbH

Schaberger Str. 59  
D-42659 Solingen  
Germany

Fon: ++49 (0)212 - 24 20 8 0  
Fax: ++49 (0)212 - 24 20 8 10  
eMail: [info@eltex-ident.com](mailto:info@eltex-ident.com)  
Internet: [www.eltex-ident.com](http://www.eltex-ident.com)

